

FR 30 D 45

PATENTED

WALK BEHIND SCRUBBER DRYERS FR 30 SERIES - WITH TRACTION

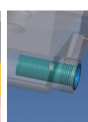
FR 30 represents something unique in the cleaning market. First of all the new design, which makes FR 30 a masterpiece of aesthetic and ergonomics. Then 30 liters of tank capacity, an high manoeuvrability and above all a complete set of integrated solutions make FR 30 suitable for any environment and surface: - Control panel with display: for an easy and fast selection of all the main functions; - "Silent mode" function: ideal for day cleaning and in all the environments (hospitals, schools, ..) where silence is strictly required; - Compact squeegee: large only 65 cm, and adjustable, for excellent drying results; - A complete set of filters (as well as the debris tray) to protect the main components and give to FR 30 the max reliability; - Performance: high speed (up to 4,5 km/h), high productivity, remarkable running time (2h and more), top cleaning results. FR 30 is now even more reliable and performing thanks to the new sensor TOUCH SYSTEM. FR 30 TOUCH can be moved and controlled only using a thumb: intuitive, user friendly and reliable. It is available in two versions: basic and full package (standard on board charger + batteries).



Touch System



"Silent mode" function



"Built in" solution tank filter



Adjustable squeegee



Compact squeegee



Debris tray + recovery tank filter



Tiltable recovery tank

PRODUCT IDENTIFICATION

TYPE	REF. NO.	PIECES/PALLET
FR 30 D 45 TOUCH	10.4183.00	1
FR 30 D 45 BC TOUCH	13.4183.00	1

TECHNICAL DATA

FEATURES

Cleaning width	mm	430
Squeegee width	mm	650
Productivity (theor./practical)	m ² /h	1935 - 1160
Power supply		Battery 24V
Installed power	W	930
Advancement		with traction
IP code		IPX3

BATTERIES

Type	Gel battery set (2 pcs) 12 V 76 Ah (**)	
Running time	h - min	2 h
Battery compartment dimensions x No	mm x No	340x340x240 x 1

BRUSHES

Diameter - Pad x No	mm - inch x No	430 - 17" x 1
Motor rating x No	W x No	350 x 1
Motor speed	rpm	190

STANDARD ACCESSORIES

TYPE	REF. NO.
Solution tank filling hose	30.0024.00
17" Polypropylene brush ø 0.7	40.0002.00
On board charger 24 V 9 A (**)	22.0623.00
Gel battery set (2 pcs) 12 V 76 Ah (**)	18.0000.00
Detachable brush deck splash guard (without bristles)	24.0263.00
Brush deck splash guard bristles	40.4006.00
Front + rear natural rubber blades	96.0159.00

Down pressure - Contact pressure	Kg - g /cm ²	18 - 17,4
TRACTION		
Motor rating	W	180
Driving speed	Km/h	4,5
Hill climbing ability	%	2
VACUUM		
Motor rating	W	400
Vacuum	mbar/mmH2O	1189
Airflow rating	l/s	28
Noise level	dB(A)	64/58 *
TANK		
Type		Double tank
Cleaning solution tank	l	30
Recovery tank	l	33
Weight (empty/with batteries)	Kg	74 / 127
Dimensions	mm	1210x560x1020

OPTIONAL ACCESSORIES

TYPE	REF. NO.
17" Polypropylene brush ø 0.9	40.0102.00
17" Tynex brush ø 1.2 grit 80	40.0202.00
Pad holder 420 mm (for 17" pad)	40.1007.00
Set front + rear polyurethane squeegee blades	96.0011.00

(*) Silent mode function

(**) For BC version